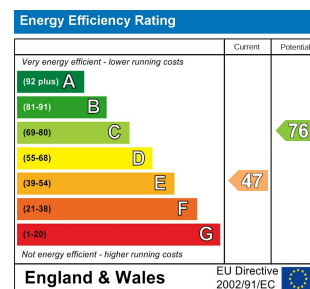




- Reception Room 14'11" x 10'6"
- Reception Room 14'4" x 11'3"
- WC
- Kitchen 14'11" x 9'2"
- Conservatory 8'8" x 8'7"
- Bedroom 14'4" x 12'8"
- Bedroom 11'5" x 8'11"
- Bathroom 8'5" x 5'8"
- Bedroom 9'2" x 9'1"
- Bedroom 14'6" x 7'9"
- Ensuite 8'11" x 3'6"
- Bedroom 12'4" x 8'11"
- Garden 32'9"



QUEENS GROVE ROAD, CHINGFORD

Offers In Excess Of £825,000 Freehold
5 Bed House - Mid Terrace



Features:

- Five Bedroom House
- Mid Terrace Victorian
- Arranged Over Three Floors
- Approx. 1499 Square Foot
- Short Walk to Epping Forest
- Easy Access to Chingford Station
- Quiet Residential Location
- Close to Local Amenities

This stunning five-bedroom Victorian mid-terrace home combines period charm with flexible living space, all in a fantastic location.

Spanning almost 1500 square feet across three floors, highlights include two reception rooms, a spacious kitchen with an adjoining conservatory, a convenient ground floor WC, a first floor family bathroom, and a loft master complete with ensuite. To the rear, a secluded south-facing garden provides more living space.

All this is just moments from Chingford Station and the peaceful woodlands of Epping Forest, offering the ideal balance of connectivity and nature.

E11, E7, E12 & E15
hello11@stowbrothers.com
0203 397 2222

E4 & N17
hello4@stowbrothers.com
0203 369 6444

E17 & E10
hello17@stowbrothers.com
0203 397 9797

E18 & IG8
hello18@stowbrothers.com
0203 369 1818

E8, E9, E5, N16, E3 & E2
hellohackney@stowbrothers.com
0208 520 3077

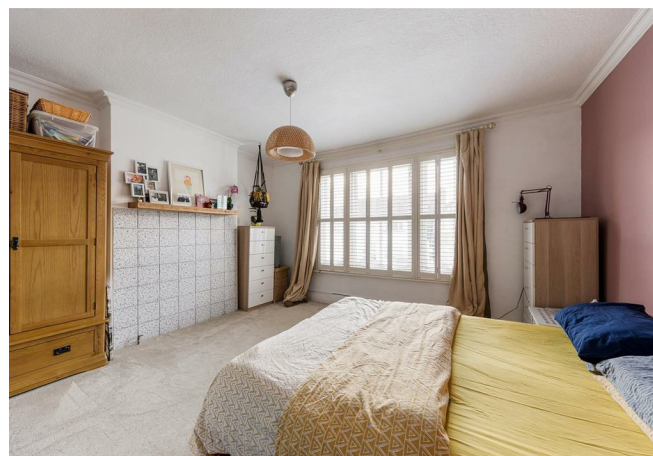
New Homes
newhomes@stowbrothers.com
0203 325 7227

Investment & Development
id@stowbrothers.com
0208 520 6220

Property Maintenance
propertymanagement@stowbrothers.com
0203 325 7228

STOWBROTHERS.COM
@STOWBROTHERS

REQUEST A VIEWING
0203 369 6444



IF YOU LIVED HERE...

With almost 1500 square feet of living space, this home effortlessly blends period charm with practical family living. From the moment you approach the property, the classic Victorian frontage sets an elegant tone.

Step inside to a beautifully proportioned front reception room, bathed in natural light from the shuttered bay window. Period features, including a decorative fireplace alcove, add character, while timber flooring brings warmth and continuity. The adjoining second reception is equally impressive, enhanced by bespoke carpentry that adds both style and useful storage.

To the rear, the generous kitchen flows into a bright conservatory, creating a sociable space perfect for everyday family life and entertaining. Rustic-style units, timber worktops and smart appliances add practicality and style. A convenient ground-floor WC completes the level.

Upstairs, the first floor offers three well-sized bedrooms alongside a smart family bathroom. The loft provides two further bedrooms, including one with a sleek ensuite, offering flexible living for guests or a home office.

Outside, the south-facing rear garden is a real highlight, a secluded retreat with mature foliage, a spacious lawn, and a decked patio.

Beyond the property itself, the location is excellent. From Chingford, you can reach Liverpool Street in under 30 mins via the Weaver line Overground. Walthamstow Central is just three stops away, where the Victoria line offers swift access to the West End. For drivers, both the M25 and North Circular are reachable in around ten minutes.

WHAT ELSE?

- Moving in treat meal? Enjoy fantastic food and drink at Royal Forest, now part of Raymond Blanc's Heartwood Collection, 0.6 miles away.
- Or try the Rusty Bike for excellent Thai. Just upstairs, you'll find Sushi Monster for playful, fresh Japanese dishes, a six minute stroll.
- Gina is already making waves as the area's hottest new destination. Recently featured in Vogue magazine, this stylish cafe blends effortlessly chic interiors with a warm atmosphere. It's 0.2 miles away, so a real local spot.



A WORD FROM THE EXPERT....

"I love the outdoors as much as the buzz of the city, so Chingford is perfect for me. With Epping Forest on the doorstep, cycling, hiking and exploring are always close by, while transport links take you into the city in under half an hour. Moving between Chingford Mount and North Chingford for a pub, café or takeaway means there is plenty of choice. I often meet friends at The Rusty Bike for Thai food, a wide beer selection or a game of football. Weekends are for the Kings Head, with its sunny beer garden and cosy roasts in winter. Travelling between appointments is a joy thanks to the friendly community, where you are often greeted with a smile. The area's diversity adds to its appeal, with international takeaways and supermarkets offering new tastes to discover. Evenings are for dog walks at Yates Meadow, where peaceful hills meet city skylines. Chingford truly has something for everyone and is more affordable than much of London".

WILL TURNER
E4 ASSISTANT BRANCH MANAGER

REQUEST A VIEWING
0203 369 6444

FOLLOW US ➔ @STOWBROTHERS
STOWBROTHERS.COM